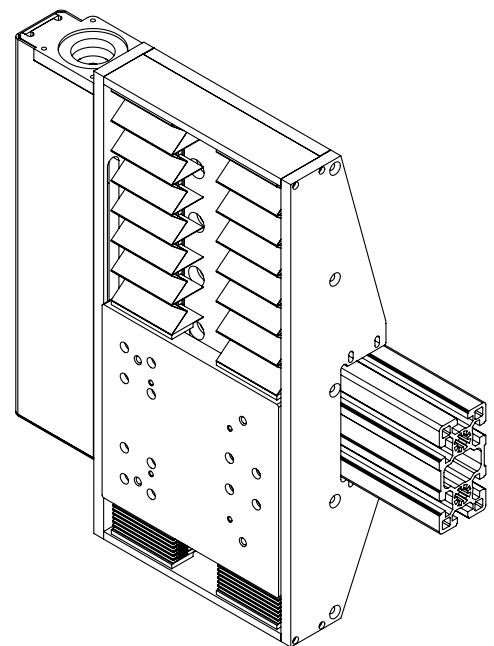


Our 412 series of standard stages were originally optimized for Z-axis applications, which featured a standard precision Acme screw that cannot be back driven by the mounted load. With varied travel lengths, optional ball screws, brakes, and versatile mounting these stages evolved to become appropriate for almost any motion requirement. As with all of our products, customization to fit specific applications is no problem.

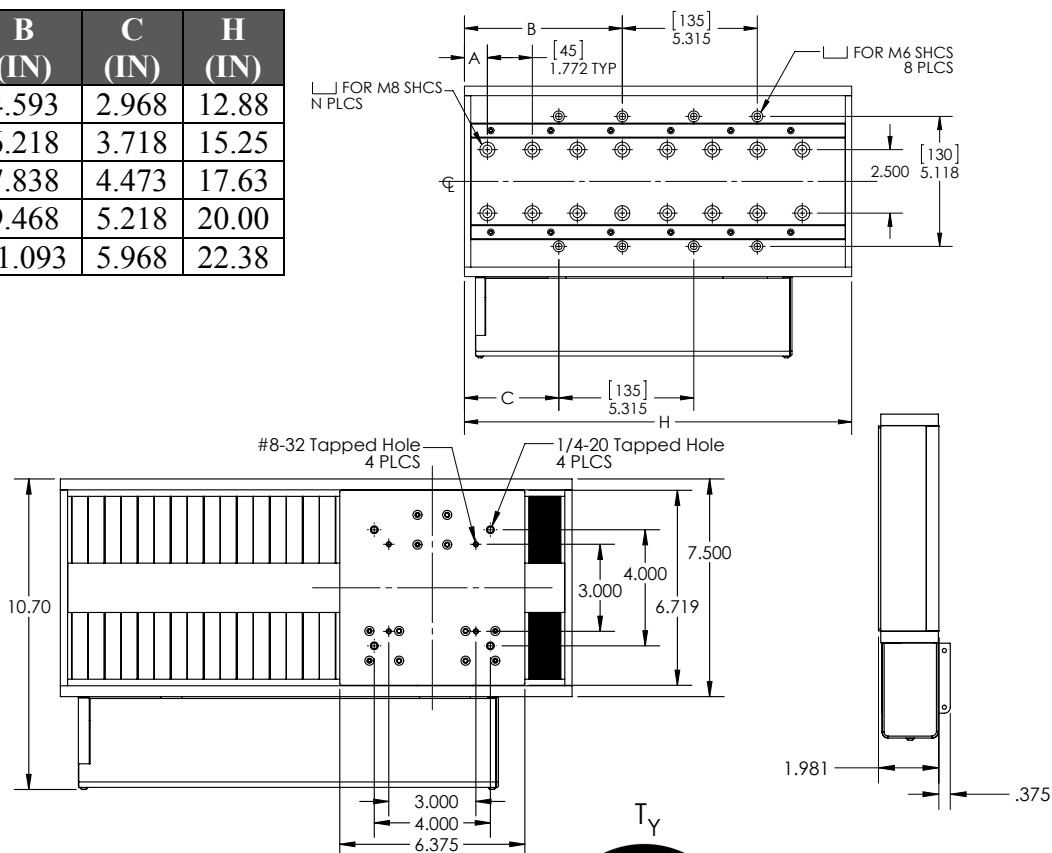
Features:

- Standard travel lengths of 4", 6", 8", 10", and 12"
- Precision machined stress free aluminum tooling plate provides built in accuracy
- Optimized for vertical applications with a precision ACME screw that does not back drive
- Optional precision rolled ball screw
- Low profile design
- Configurable for horizontal and vertical applications
- Precision ground steel rails with preloaded 4 point contact recirculating bearings
- Bellows provide protection from dirt and contamination
- 2 optical limit switches as well as a third center switch to optionally home to. Limit switches include 5' Cable with Amphenol connector
- Optional angled gussets (shown right) to mount to standard 45x90mm extrusions
- Stainless steel helical motor coupling
- NEMA 23 motor mount, standard



Travel (IN)	A (IN)	N	B (IN)	C (IN)	H (IN)
4	1.049	14	4.593	2.968	12.88
6	.903	16	6.218	3.718	15.25
8	.751	20	7.838	4.473	17.63
10	.609	22	9.468	5.218	20.00
12	2.234	24	11.093	5.968	22.38

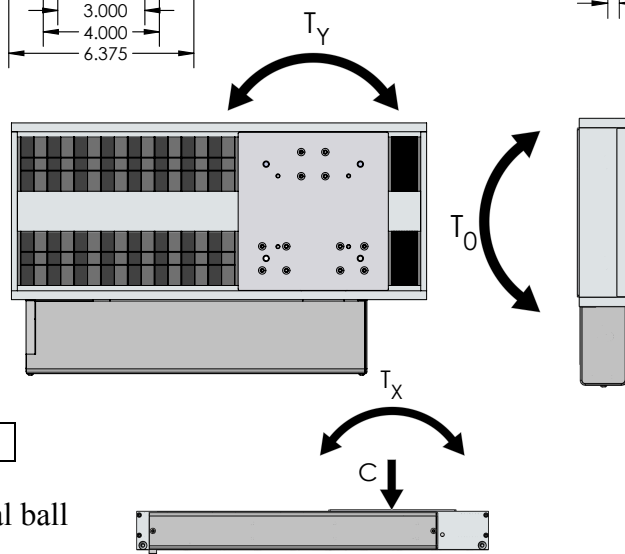
- Hole pattern can be easily adapted for special Requirements upon request



LOAD and MOMENT DATA in pounds/foot-pounds	
C	1000 lbs
T_x	75 ft-lbs
T_y	75 ft-lbs
T_o	75 ft-lbs

Straight line accuracy	0.002" over 12"
------------------------	-----------------

- Electronic brake available as an option for vertical ball screw applications to prevent back drive



Drive Screw Options			
	ACME Screw	Rolled Ball Screw	Ground Ball Screw
Diameter-pitch	5/8-8 (in)	14-4 (mm)	14-4 (mm)
Accuracy (in/ft)	<0.009"	0.002"	0.0005"
Repeatability (in)	<0.005"	<0.0008"	Preloaded