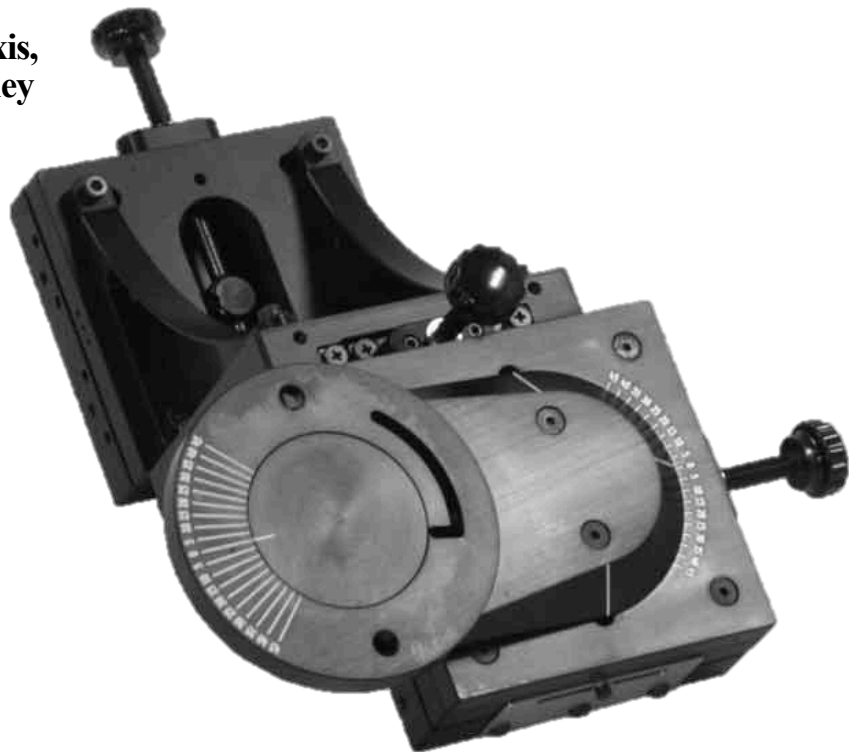


We developed this modular series of manual slides for precise positioning of laser focus heads however their stability, accuracy, and modularity make them suitable for many other applications. They utilize preloaded crossed roller bearings for maximum stability and smooth motion over the full 1.1 inches of total travel. They are available as a single axis, but because of their modular design they can be stacked in virtually any configuration with optional swivels and right angle brackets. A few of the options are shown here.

The photo to the right has X, Y, and Z-axis as well as (2) tilt/swivel axis. The round swivel disk is where the laser head would normally be mounted.



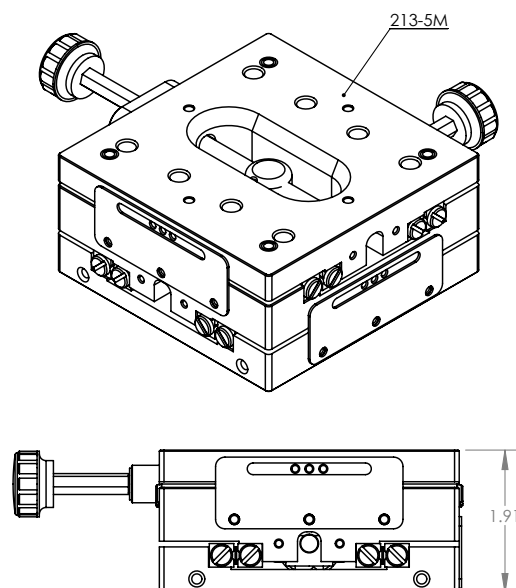
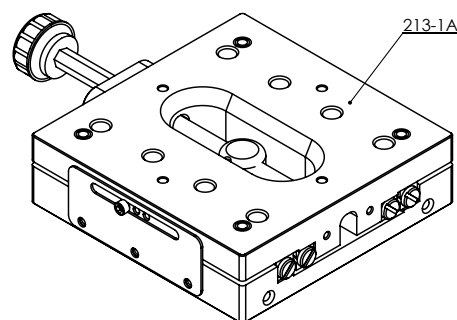
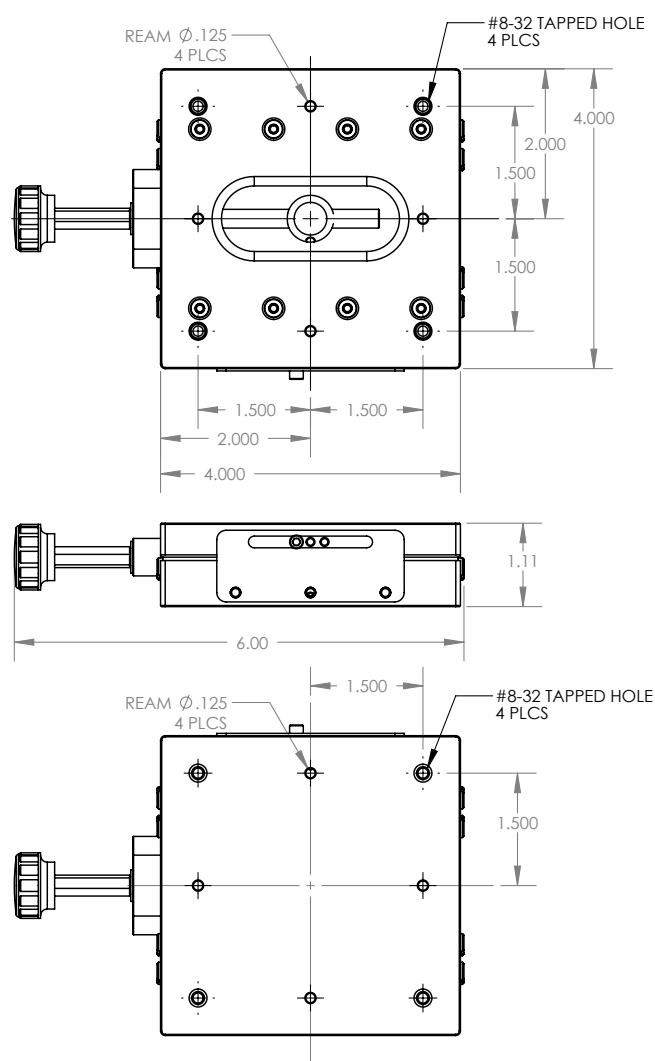
The sheet metal plates visible on the sides of the slides (shown left) are the locks for the individual axis. Tightening the single screw locks the axis while assuring that no side loads are induced to cause unwanted movement. The gussets can be mounted in any orientation. A single set screw locks the adjustable rotation axis; the access hole is visible in the edge of the round mounting plate at the top of the assembly.

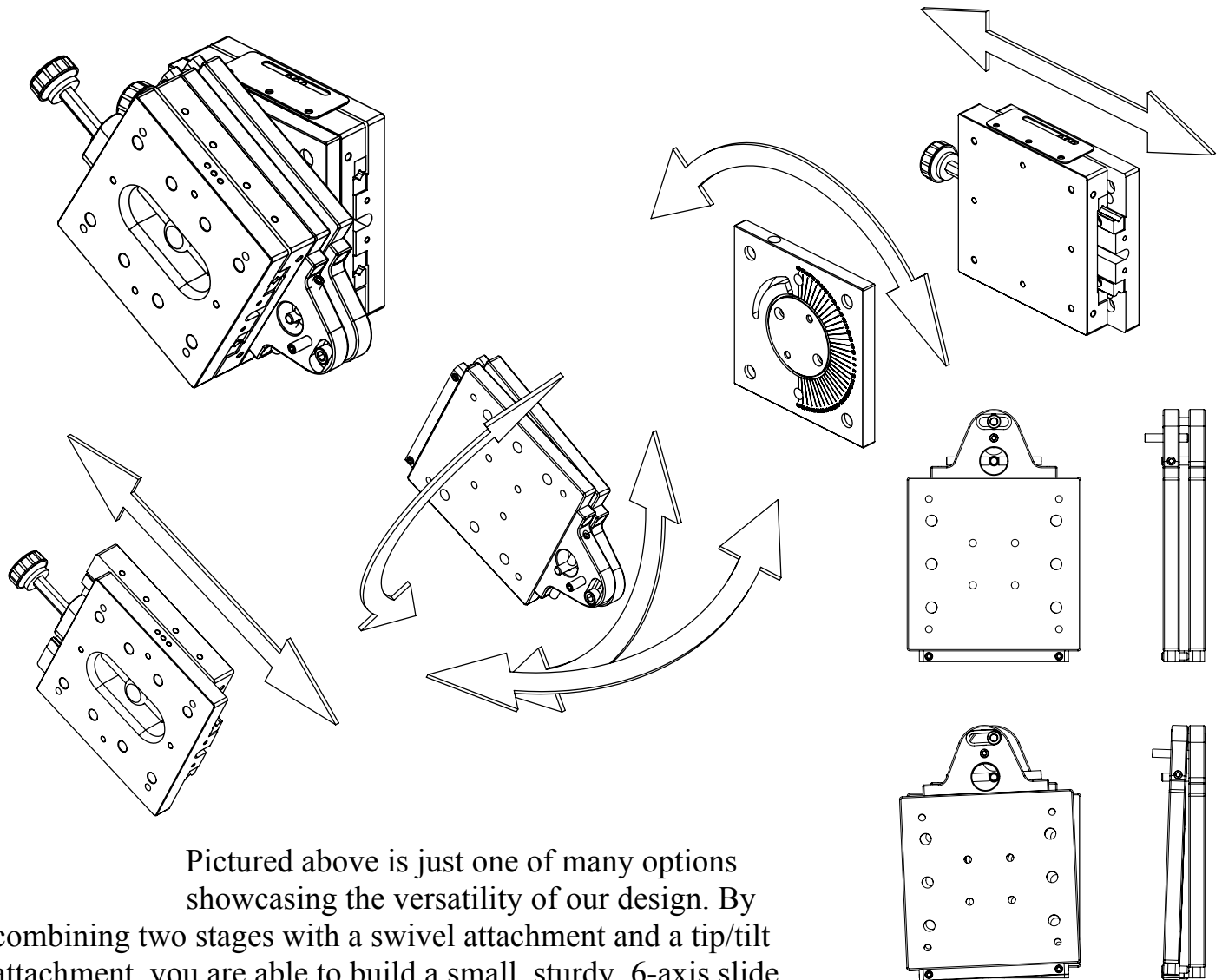


Single axis slide (left), 4 x 4 x 1.125"



This combined slide (shown left) is 1.900 inches tall compared to 2.25 inches if two single axis slides are stacked together.





Pictured above is just one of many options showcasing the versatility of our design. By combining two stages with a swivel attachment and a tip/tilt attachment, you are able to build a small, sturdy, 6-axis slide assembly with a total height of 3.57 inches.

Load capacity of a single stage

50 pounds from any direction